

## EVACUATION PLAN

---

- Faculty who are teaching classes at the time of an emergency are responsible for the orderly evacuation of the class and should be the last one out of the classroom to verify evacuation for responders.
- DO NOT take time to turn off computers, printers, or office lights. Close, but DO NOT lock, office door and windows.
- Gather your personal belongings **if it is safe to do so**. (Reminder: take prescription medications out with you if at all possible; it may be hours before you are allowed back in the building.)
- Exit the building through the closest exit. DO NOT use the elevator.
- All personnel should be familiar with exit paths for their areas. REFER TO YOUR FLOOR PLAN and be familiar with the shortest path possible and a secondary exit.
- Proceed in an orderly manner as quickly as possible to the nearest exit and then to the designated rally point.
- Be alert for individuals with disabilities or injuries who may need assistance. However, under no circumstances should an individual risk or jeopardize their personal safety in an attempt to rescue another person. Notify the building proctor or responding emergency personnel of any known individual that may be unable to independently exit the building.
- Stay at the designated rally point until you are instructed to leave. This way an accurate head count can be taken. Faculty and lab assistants are responsible for the students. Keep streets, fire lanes, hydrant areas and walkways clear for emergency vehicles and personnel.
- Upon arrival of University Police, the proctor will assist them in whatever manner they request or direct. Poudre Fire Authority staff or the University Police will clear the building, checking elevators, areas for the physically disabled and laboratory areas.
- Emergency alarms being turned off DOES NOT mean the building is clear and safe to re-enter. They are silenced so that emergency response personnel are able to communicate with each other. DO NOT RE-ENTER THE BUILDING for any reason until instructed to do so by fire department, EHS, or police officials.

---

### CAMPUS EVACUATIONS

---


- Evacuate as instructed in emergency announcement.
- Leave by vehicle unless instructed otherwise.
- Do not return to campus until instructions are received saying it is safe.
- Move to designated campus rally points if unable to go home or if you are instructed to do so.

---

## BUILDING EVACUATION PLANS

---

### Map legend:

Red		= "You Are Here"
Blue		= Fire Alarm Pull Station
Green		= Exterior Exit
Black		= Fire Extinguisher
Yellow		= Rally Point
Black	<b><u>AED</u></b>	= AED Cabinet
Black	<b><u>SS</u></b>	= Safety Shower
Black	<b><u>FB</u></b>	= Fire Blanket
Black	<b><u>SK</u></b>	= Spill Control Kit
Black	<b><u>EW</u></b>	= Eyewash
Black	<b><u>EGS</u></b>	= Emergency Gas Shutoff

EMERGENCY EGRESS PLANS ARE CURRENT AS OF  
**JULY 24, 2018**

---

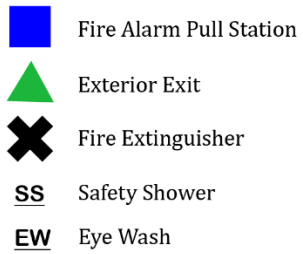
## BUILDING RALLY POINTS

---

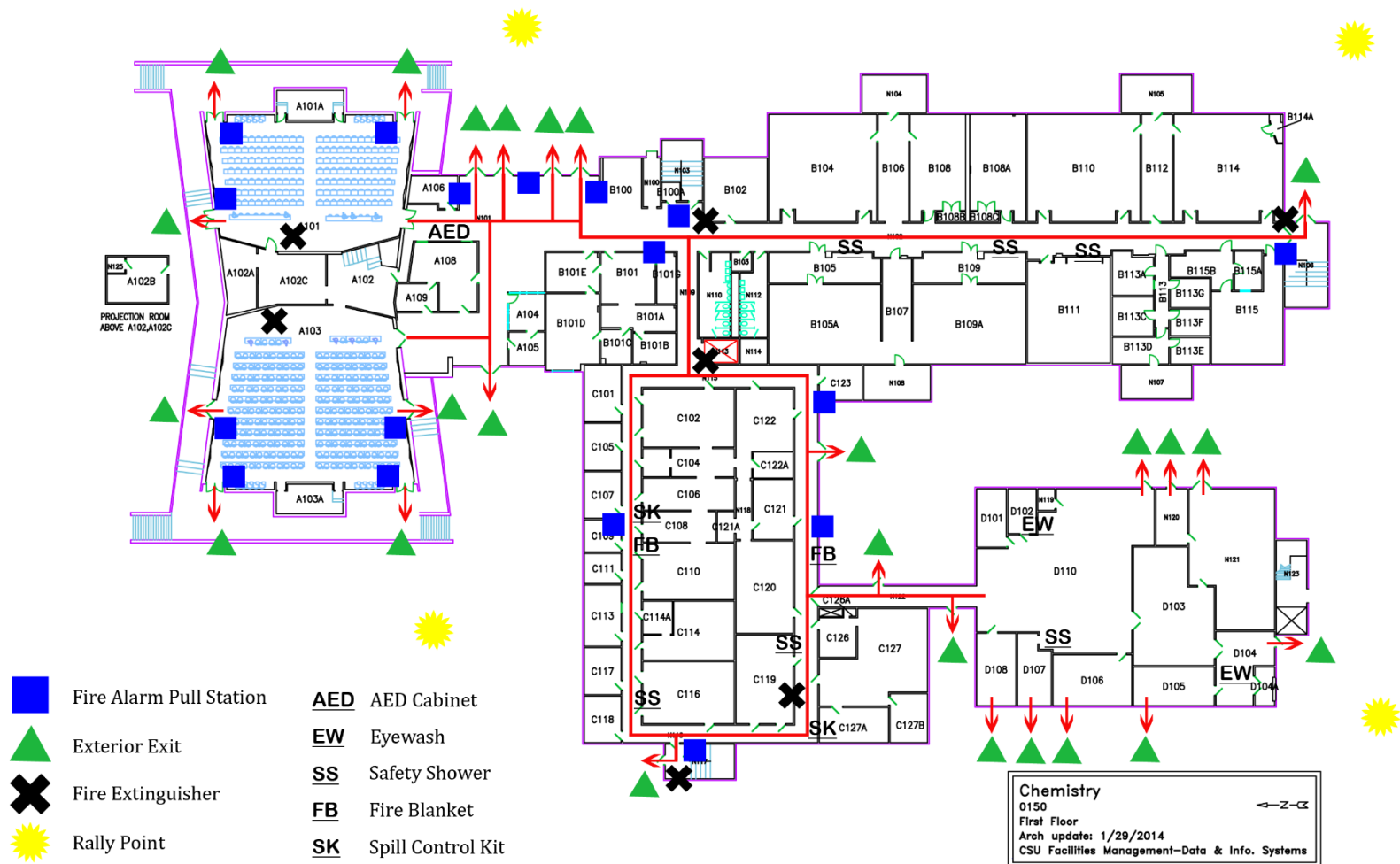
Rally points for each building are at the outdoor locations listed below.

- Chemistry Building
  - Main lobby/northeast exits (A-wing) – Front of building near Yates overpass
  - Southeast exit (B-wing) – Southeastern corner of building near bike racks
  - West exits (C-wing) – Northwestern corner of building in grass field
  - South/southwest exits (D-wing) – Grass field behind main stockroom
- Chemistry Research Building
  - Southeast exit – Picnic tables and 'molecules' at front of building
  - Southwest exit – Picnic tables and 'molecules' at front of building
  - Loading dock/west exit – Northeast corner of building along bike path
  - Northeast exit – Northeast corner of building along bike path
- Yates Building
  - East exit – East side of Yates in near bike racks (walkway toward CHEMR)
  - West exit – Front of building near Yates overpass

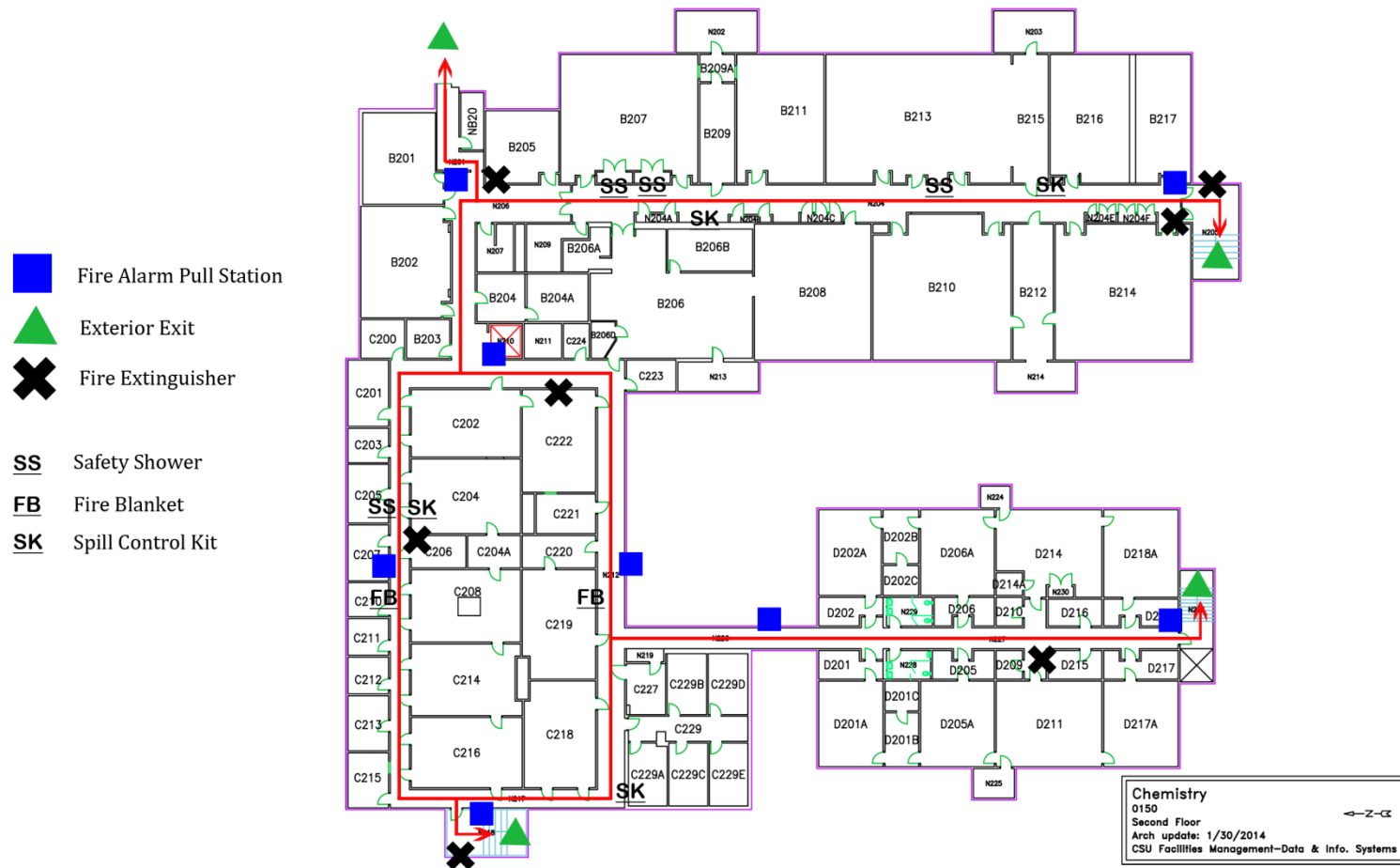
# Emergency Evacuation Plan - Chemistry Basement



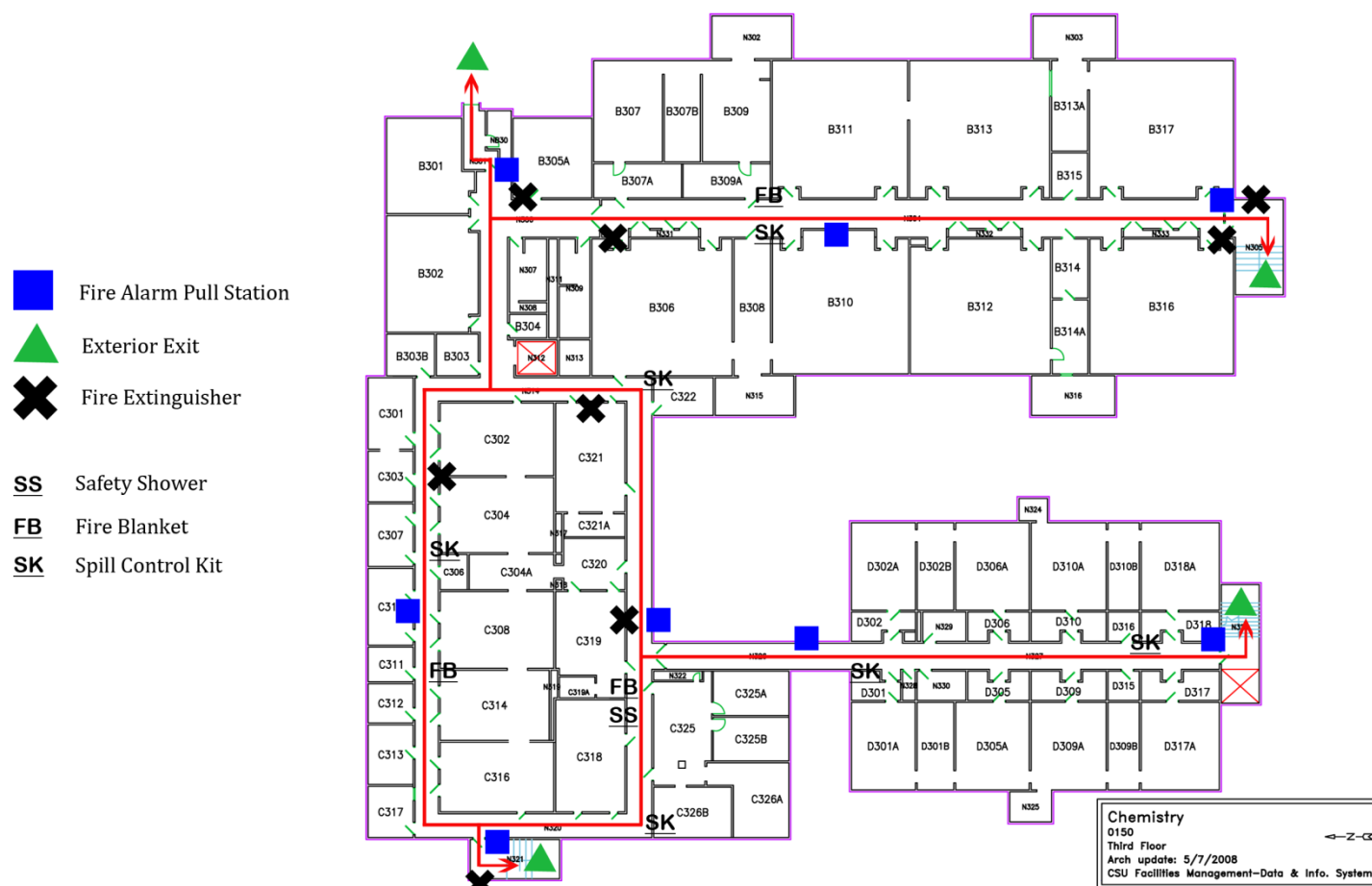
# Emergency Evacuation Plan - Chemistry 1st Floor



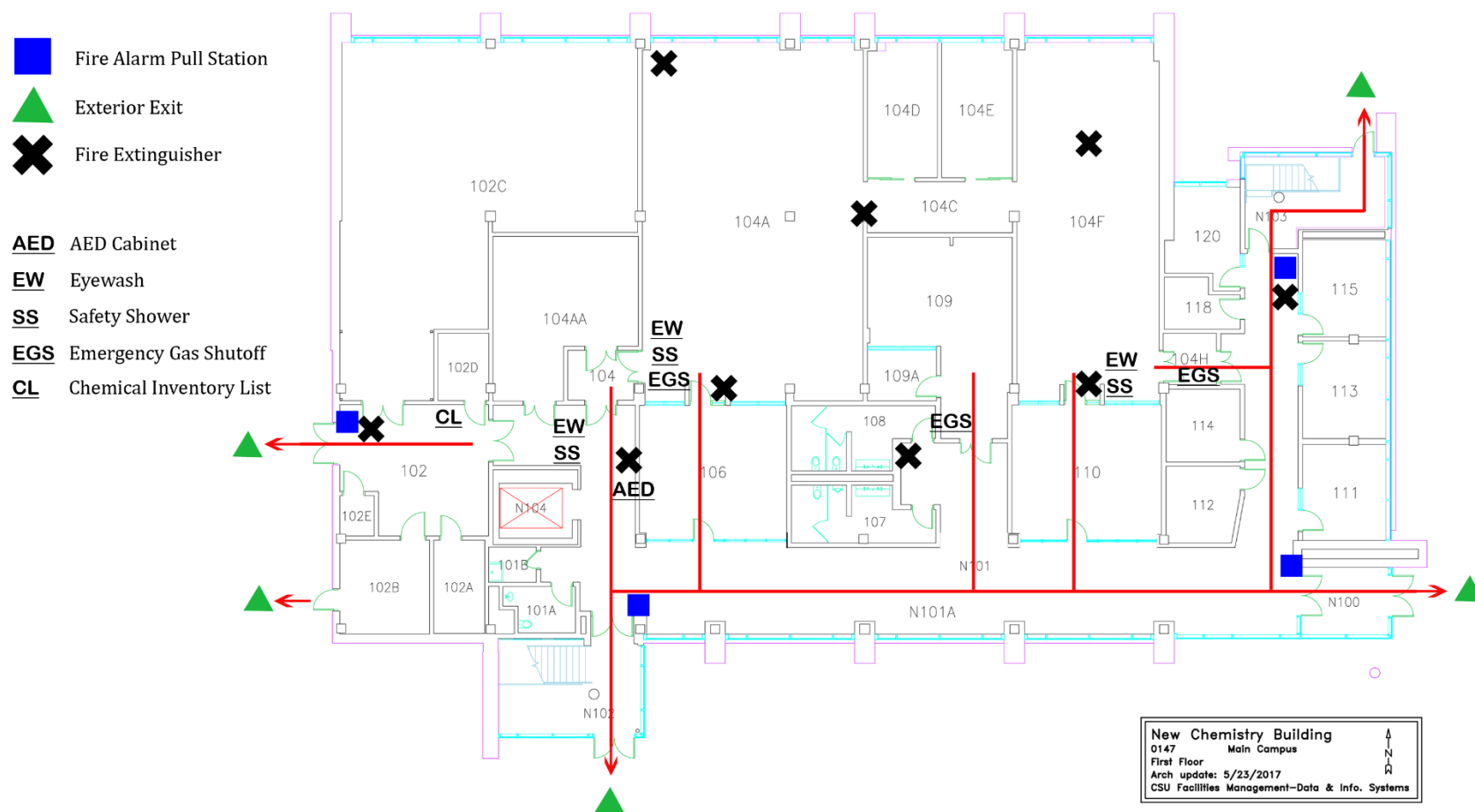
# Emergency Evacuation Plan - Chemistry 2nd Floor



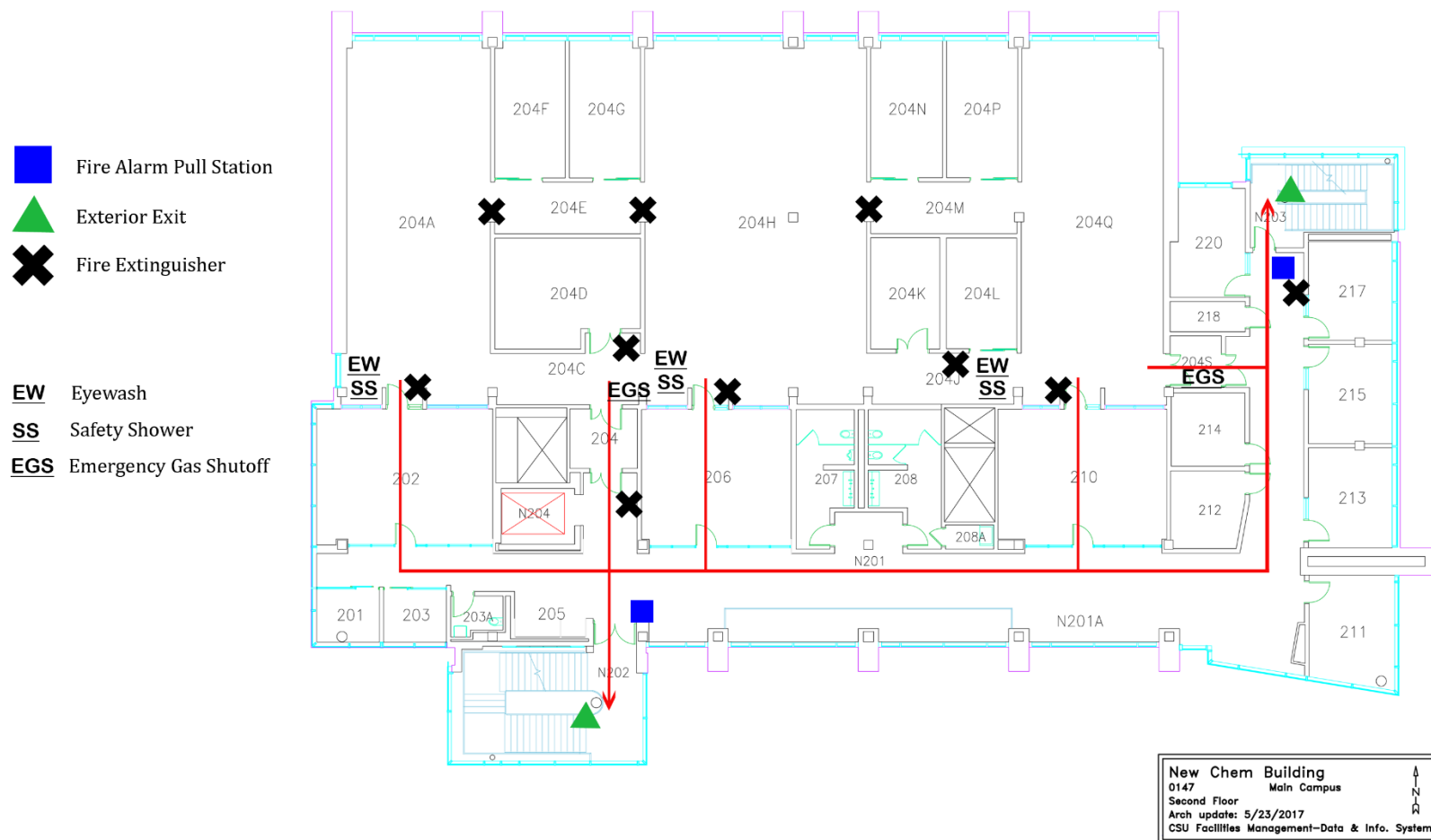
# Emergency Evacuation Plan - Chemistry 3rd Floor



# Emergency Evacuation Plan - Chemistry Research 1st Floor






# Emergency Evacuation Plan - Chemistry Research 2nd Floor

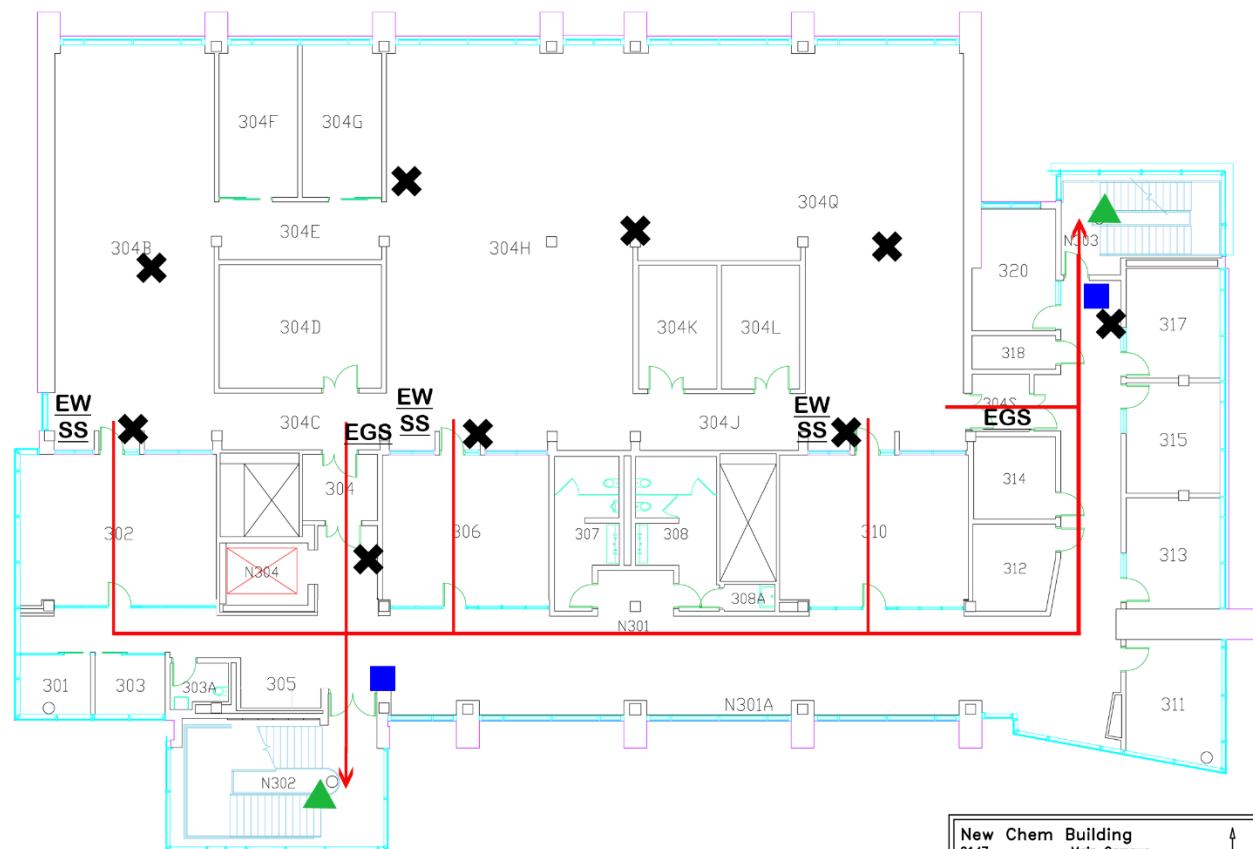




# Emergency Evacuation Plan - Chemistry Research 3rd Floor

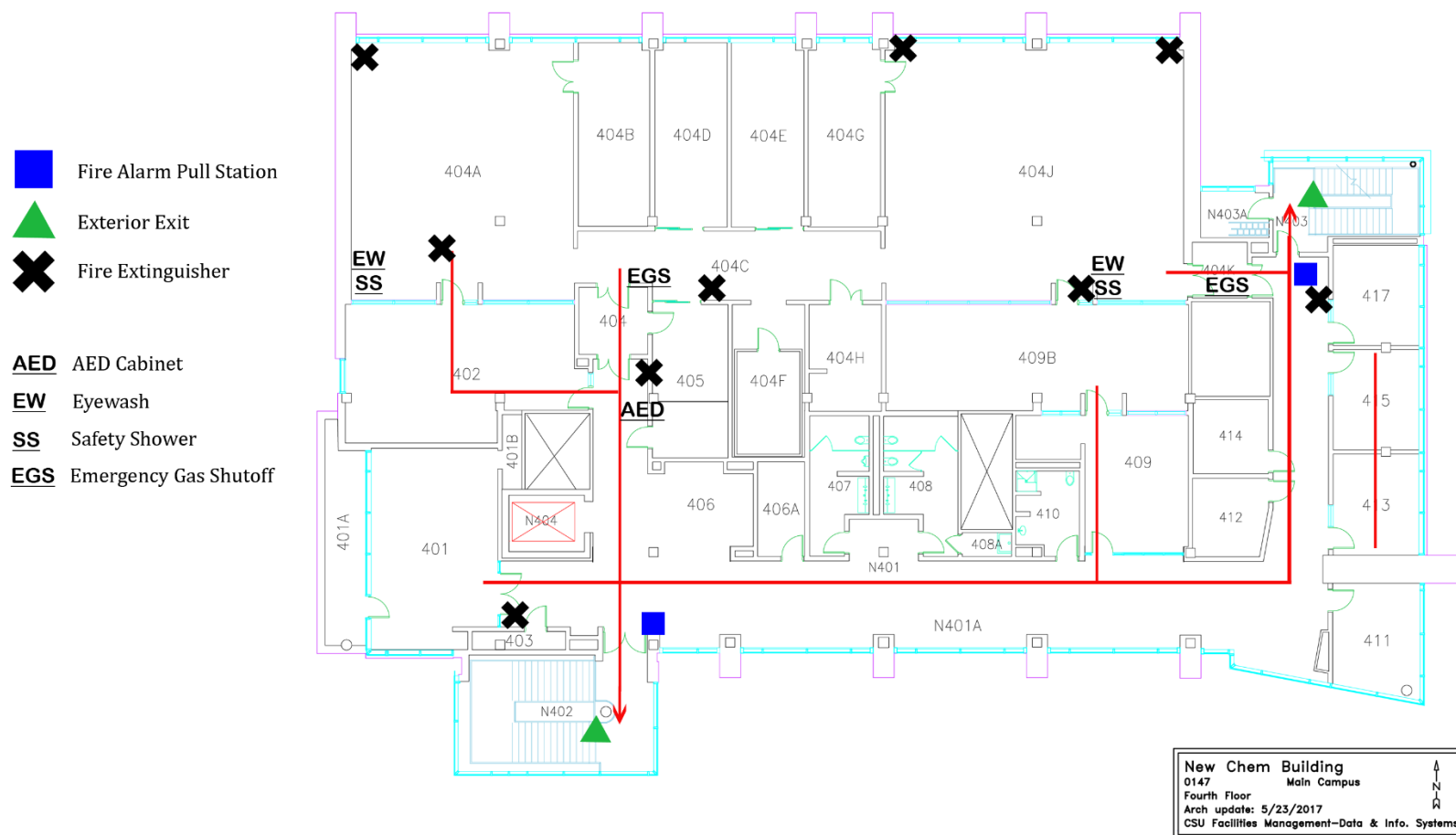
-  Fire Alarm Pull Station
-  Exterior Exit
-  Fire Extinguisher

- EW Eyewash
- SS Safety Shower
- EGS Emergency Gas Shutoff

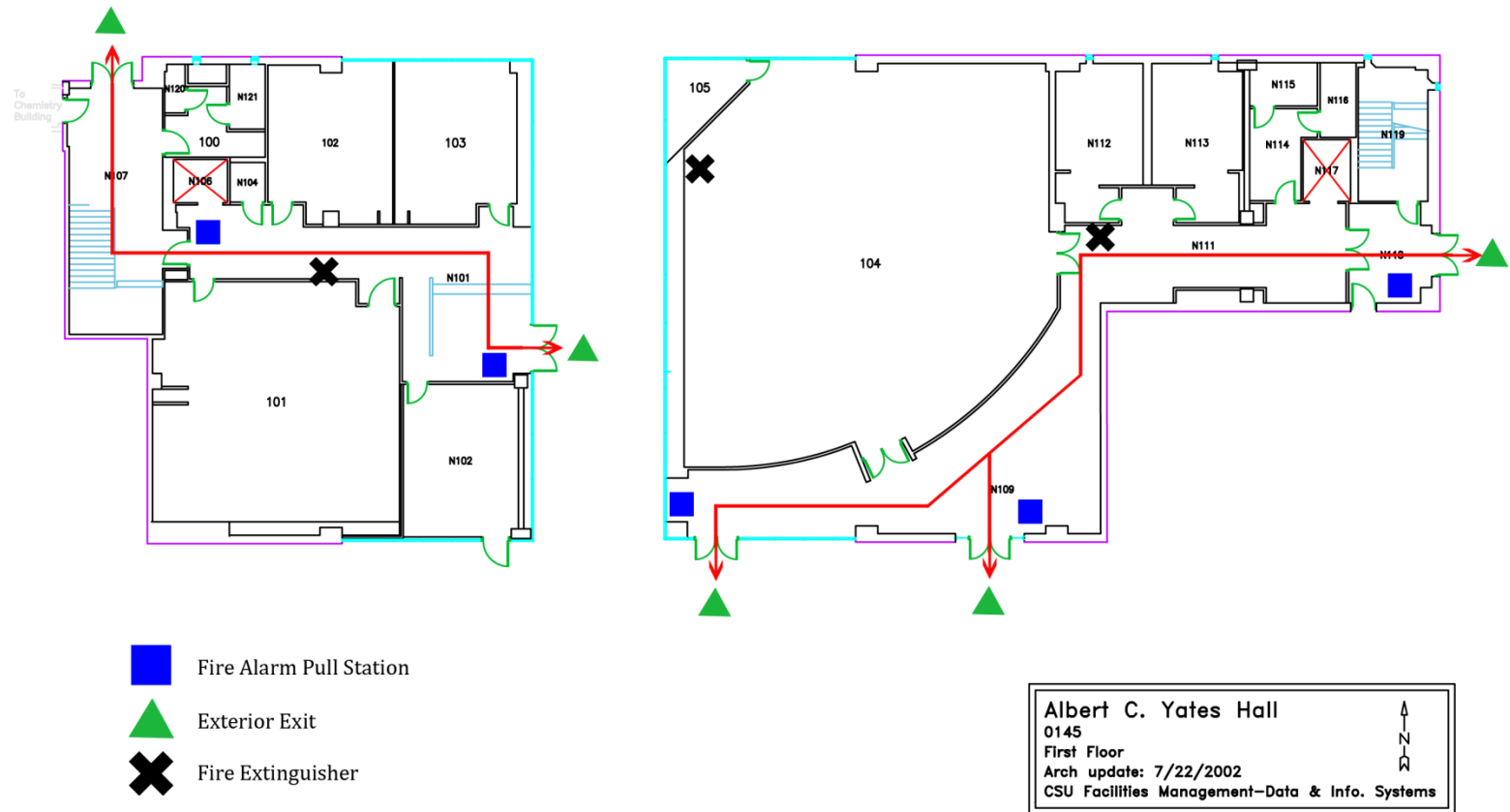


New Chem Building  
0147 Main Campus  
Third Floor  
Arch update: 5/23/2017  
CSU Facilities Management-Data & Info. Systems

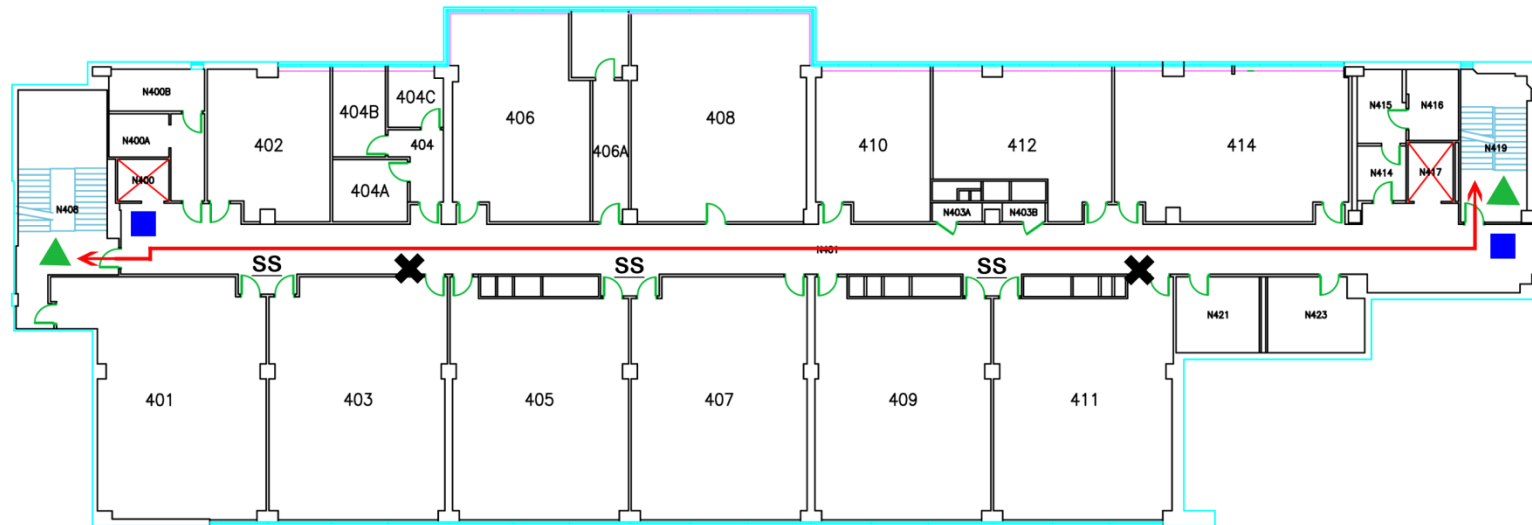
# Emergency Evacuation Plan - Chemistry Research 4th Floor



# Emergency Evacuation Plan - Yates 1st Floor



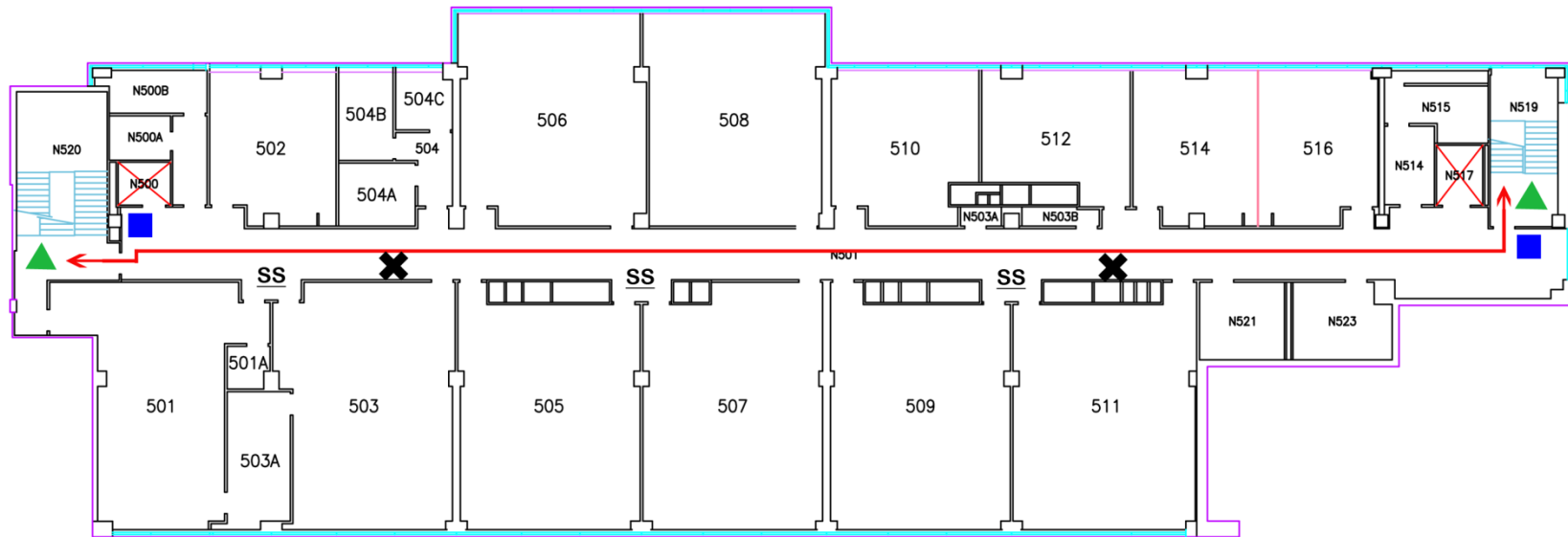
# Emergency Evacuation Plan - Yates 4th Floor



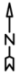
-  Fire Alarm Pull Station
-  Exterior Exit
-  Fire Extinguisher
-  Safety Shower

Albert C. Yates  
0145  
Fourth Floor  
Arch update: 7/21/2014  
CSU Facilities Management-Data & Info. Systems

# Emergency Evacuation Plan - Yates 5th Floor



-  Fire Alarm Pull Station
-  Exterior Exit
-  Fire Extinguisher
-  Safety Shower

<p>Albert C. Yates Hall  0145  Fifth Floor  Arch update: 7/21/2014  CSU Facilities Management—Data &amp; Info. Systems</p>	
--	---